



# HAWK HEADLINES

November 9, 2023

## Principal's Message

Dear Hutton Parents and  
Families,



As we continue to reflect on the significance of Veteran's Day, I wanted to take a moment to express my gratitude to those within our community who have served our country. Our Veteran's Day assembly was a moving tribute, not only to national heroes but to the members of our own Hutton family who have donned the uniform.

The presence of veterans who are friends and family to our students and staff added a profound personal touch to the occasion. Each story, each badge, and each uniform represented a journey of commitment and courage that deeply touched our students and reminded us all of the sacrifices made for our freedoms.

We believe that recognizing these brave individuals helps to instill values of respect, honor, and patriotism in our young learners. Thank you to everyone who attended the assembly, and a special thank you to the veterans and their families for their service to our nation. Your dedication is an inspiration to us all.

LaTonya Simmons  
Principal

## Upcoming Events

**November 14**  
World Languages  
Chinese & Korean

**November 15**  
World Languages  
Spanish

**November 16**  
World Languages  
French & Japanese

**November 13, 20 & 27**  
4/5 Choir Practice

**November 10**  
No School  
Veterans Day Observed

**November 17**  
Fall Harvest Parties

**November 22-24**  
No School  
Thanksgiving Break

**November 28**  
PTG Meeting  
Library  
6:30 PM  
[Zoom Link](#)



*Land Acknowledgement: We acknowledge that we are on the unceded lands of the Spokane Tribe. The Spokane people shared this place with other tribes through their relations, resources, history, trade, and ceremony. We thank the caretakers of this land, who lived, and continue to live here Since Time Immemorial. This land holds the knowledge, culture, and spirit of "The People of the River."*

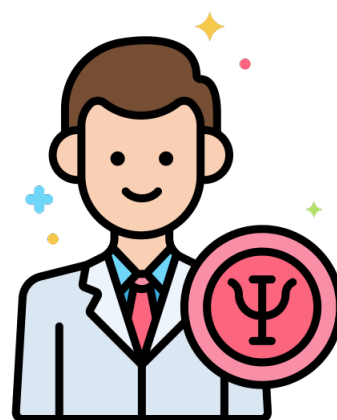


## Thank You School Psychologists!

National School Psychology Week was this week! Did you know SPS has 34 school psychologists and five school psychology interns and practicum students supporting schools and families in our district?

School Psychologists consult with teachers, families and other mental health professionals to improve support strategies for students, work with school administrators to improve school-wide practices and policies, collaborate with community providers to coordinate services, provide direct support with interventions for students, and evaluate students for special education services to help school teams develop and meet goals for student's Individualized Education Program (IEP).

Hutton's School Psychologist is Sherry Wilson. Thank you, Mrs. Wilson, for all the hard work you do to support families and staff!



## National Native American Heritage Month November 1-30

As we enter November, we embrace National Native American Heritage Month with great

reverence at Hutton Elementary. This is a time for all members of our school community - parents, staff, and students - to come together and honor the rich and diverse cultures, histories, and contributions of Native Americans. Spokane, with its deep Native American history, serves as a unique backdrop for this observance. Throughout the year, we will engage in educational activities that deepen our understanding of Indigenous traditions, art, and the enduring wisdom they bring to our world. Let us join hands in fostering an environment of respect, inclusion, and unity as we recognize and appreciate the invaluable heritage of Native Americans.

## Our Amazing Students

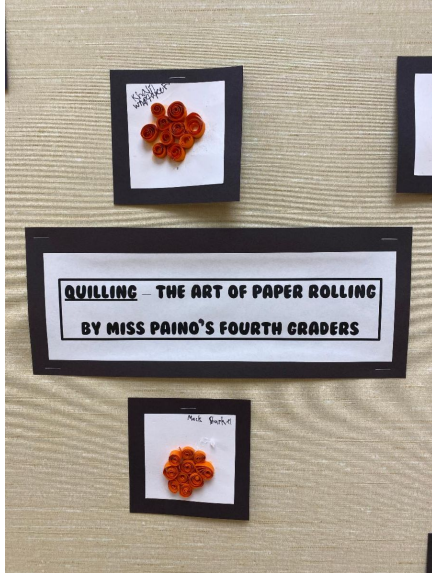


## 5th Grade Leadership

Amazing things are happening in 5th Grade! I got a chance to stop by Genius Hour in 5th grade this week and I was so inspired by the amazing things our students are doing. From collaborating and creating a plan to be Teacher's Aides, writing Mini Grants, drafting a letter to community members, designing posters and graphics for school wide and community engagement events -- our 5th grade crew is stepping up to make a difference and impact on both our school and local community!!

-Mrs. Simmons





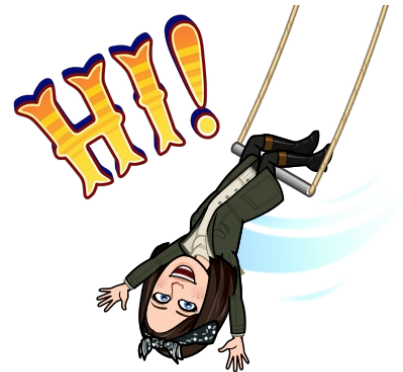
## Enjoy this amazing Quill Art from Miss Paino's 4th Graders

### Counselor's Corner

#### *From Mrs. Snider*

One of Spokane Public Schools initiatives is the focus on increasing and **encouraging positive school attendance**. Here at Hutton, we are taking an active part in that initiative by focusing our work on increasing student attendance and recognizing students' efforts when they do attend school. The plan for this includes the following:

- A letter to all families stating the importance of being at school and the impacts of missing school.
- Being proactive with students who fall into the chronically absent category with parent conferences and home visits to address barriers with the family.
- Students who fall into the severely chronically absent category will have individual plans and a mentor matched with them.
- Incentives & Celebrations:
  - Each day a classroom will be chosen by random draw to be awarded 3 marbles if that class does have perfect attendance.
  - Monthly percentages calculated by grade level and posted for all to see. That grade level will earn an extra recess for that month.
  - Within the winning grade level, there will be one classroom who has the highest rate of attendance. That class will earn the "Poppin' Into School" trophy and a popcorn party during part of their lunch time (30 minutes total- 15 min lunch + 15 min class time right after lunch) in Room 153.
  - During counselor lessons, if everyone is attendance that day, that class will earn an extra marble.



- “Friday Finishers”- 2 kids in primary, 2 kids in intermediate who have attended every day that week are randomly chosen to receive a popcorn prize pack.

Thank you for encouraging your child to be at school being the best learner and friend they can be.

Want to be "in the know" about the happenings at Hutton? Check out my Counselor's Corner. I will have all the *things* about SEL, what is happening in the classroom with my lessons, school-wide activities, ideas for home and more.

**Mrs. Snider's Counseling Corner**

## Important School Information

### Hutton PBIS - Together We Can!

Hutton is a **PBIS School (Positive Behavior Intervention School)**. We believe that providing students with clear, consistent expectations followed by positive reinforcements leads to a positive, safe learning environment for all. We recognize that students must be explicitly taught expectations and be given many opportunities to practice them. Classrooms will learn and practice each set of expectations in a variety of locations within the building.

#### **We have a "Nest" system here at Hutton to help support PBIS.**

- Each set of AVID buddies will be grouped with two other sets making a total of six classrooms across a variety of grade levels.
- Each set of six classrooms will be known as a “Nest.”
- Each “Nest” will function as a team earning points collectively from the Hutton “Hawk Eyes” or specialists and administration.
- Each “Nest” will flock together to celebrate when quarterly goals are met. This is called a Kettle Assembly.

#### **Why a Nest System?**

- The nest system is a proven way to provide a positive climate and culture for students and staff.
- It provides a built-in place in the classroom, in the nest, and in the school community for every student to be a part of something and belong.
- Each nest creates a smaller, more connected community across grade levels fostering relationships inside and outside of individual classrooms.
- The model is visual and motivating inspiring hawks to take flight using experiential rewards.
- The structure encourages classrooms to work as teams and strengthen and celebrate as a Hawk Flock.
- The nest system embeds opportunities for fourth and fifth grade hawks to rise

and lead by example.

# Hutton Nest System

**Red-Tailed Hawk**

Nickname: "Tail Feathers"

Tail Feathers Classrooms:  
Malm, Schulte, Heaton,  
Hallett, Campbell, Duchesne



**Sharp Shinned Hawk**

Nick Name: "Sharpies"

Sharpies Classrooms:  
Iverson, Gurash, Lipsker,  
Yahne, Griffus, Crawford



**Swainson's Hawk**

Nick Name: "Swains"

Swain Classrooms:  
Swim, Muelheims, Pedersen,  
Freel, Day, Nye



**Rough-Legged Hawk**

Nick Name: "Leggies"

Leggies Classrooms:  
McCarthy, Fernandez, Dhaenens,  
Griffith, Scribner, Paino



When we have "Wear Your Nest Color Hutton Friday Spirit Day", students wear the color of their nest.

## Hutton Hawks Soar Together

Each Nest experienced a Flashlight Party this week for reaching our first school-wide goal. It was a BLAST!



# HUTTON



## ELEMENTARY

### PARENT HANDBOOK

*Home of the Hawks*



#### ***Morning Arrival, Breakfast and More!***

**Students who are not eating breakfast at school are allowed on campus beginning at 8:15 AM.** Students line up in their designated line up spot (See MAP Below) and are picked up by their teachers and walked into the building. Dismissal doors at the end of the day

are the same; EXCEPT FOR... Mrs. Campbell, Mrs. Lipsker, Mrs. Pedersen, and Mrs. Dhaenens. These four classrooms dismiss to the parent loop through the SW door.

Students wishing to eat breakfast may arrive on campus to eat after 8:00 AM. Breakfast eaters will enter into the cafeteria through the blacktop doors and eat inside the cafeteria. \*Mondays are professional collaboration days and school does not start until 9:30 AM, so breakfast would begin at 9:00 AM. Breakfast is made available to all students up to 10:00 AM.

**Students need to head directly home after school as the playground is open only to students in Express.**



## IMPORTANT INFORMATION

Parents, please remember that we are a **Single Point of Entry**. **ALL visitors need to report to the office** to enter the school building. **Please do not enter the school with your child for breakfast through the MPR doors on the black top.**

Please be aware of the daily forecast and remember to send your child to school with the appropriate clothing.



### Lost and Found

Is your child missing their jacket, hat, gloves or water bottle? Our Lost and Found is overflowing! If you are missing an item, please come and check to see if our closet has your item. **Items will be displayed out front of the office a few days before Thanksgiving.** Please come claim your child's item!



### Lunch and Recess

Do you need to know what time your child is going to recess and eating lunch? Please [click here](#) for the Lunch/Recess Schedule.

### Ala Carte Lunch Items Reminder

**Substitute Spoon and Tilly Toothbrush** here to remind you that parents can deposit money for ala carte items into your student's meal account quickly and easily at [myschoolbucks.com](https://myschoolbucks.com). You can also view your child's meal account information and get low balance reminders even if you do not make a deposit online.

**Super (extra entrée)- \$2**

**Capri Suns - \$1**



**Fruit Snacks - \$0.50**

**Milk for cold lunch students - \$1**

Cash may also be sent to school with your student, but it **must be received in the office each morning**. Students **may not bring cash to be accepted during lunch** to pay for ala carte items.



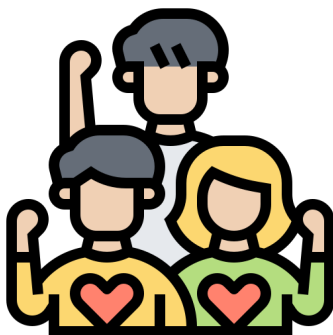
## **WE ARE HIRING!!**

**NOW ACCEPTING APPLICATIONS FOR CROSSING GUARDS  
AND NOON SUPERVISION FOR THE 2023-24 SCHOOL  
YEAR!!!**

Hutton is now accepting applications for the 2023-2024 school year to serve as morning and afternoon crossing patrol guards, as well as for the lunchroom and playground supervision during the noon hour. Even if you only have 2 or 3 days per week of availability, consider applying. If you know a neighbor or friend who might be interested, please encourage them to apply as well.



**The hourly wage for these positions is \$16.24.** It is a great way to get outdoors, interact with students and become more involved in the school that your child or children attend. For more information, please stop by the office or call 354-3030 between the hours of 7:30AM- 8:00AM.



## **Volunteering at Hutton**

Parents, if you would like to help out for field trips or in the classroom, all volunteers must have **DISTRICT CLEARANCE**. Please [click here for an application](#). The process for clearance takes about 1.5 weeks so please plan accordingly. If you have been cleared in previous years, please disregard. Thank you!

## **From the Nurse**

As cold and flu season is upon us, please consider these health guidelines before you send your child to school.



Earning Money for Hutton is Easy!

How to Earn  
[Box Tops for Education](#)

READY TO START EARNING FOR HUTTON? [GET THE BOX TOPS APP TODAY!](#)

It's as easy as scanning your receipts!

## The PTG Scoop

### Missoula Children's Theater

MCT coming to Hutton December 4th-9th! With this fun program, children grades 1-5 spend afterschool Monday through Friday learning and creating a play and on Saturday perform! Everyone gets a place in the performance and students learn about courage, creativity, and the power of the arts. **Registration opens Friday, November 10th**, but please know this is a high commitment activity. Students cannot be late or miss rehearsals if they wish to be part of the performance. Spots are limited. [Sign up here!](#)



## Use Your Creative Side

We are looking for some creative adults to teach in our **After-School Arts** program starting in



February. If you or someone you know has a creative side to share, please message us at [HuttonAfterSchoolArts@gmail.com](mailto:HuttonAfterSchoolArts@gmail.com). Teachers are compensated and if a parent volunteers, their child can get free tuition!

## Staff Appreciation Breakfast

Show our staff how much you love them by [signing up for our Staff Appreciation breakfast](#) on **Monday, November 20th**. Sign up for foods/drinks, or send money to purchase coffee!



## Chess Club

This year, **Chess Club** is running Jan 10-Feb 28, Wednesdays, from 3-4pm and is open to grades 1-5. It is a fun way for your child to learn chess and a great indoor activity for winter. The program cost is \$90 and the PTG offers scholarships. There is an activity bus available for transportation home if needed. Registration opens November 15th and closes December 22. Look out for a flyer coming home soon!

[Hutton PTG Website](#)

[Hutton PTG on  
Facebook](#)

[Hutton PTG on  
Instagram](#)

[Hutton PTG Meeting  
Zoom Link](#)

Email for more information at [huttonptg@gmail.com](mailto:huttonptg@gmail.com).

## District News

### Do you have a future kindergarten student at home?

SPS is launching a new e-newsletter focused on preparing for kindergarten. Sign up here



([https://spokanesd.qualtrics.com/jfe/form/SV\\_a9kDs7HjP5H3xeS](https://spokanesd.qualtrics.com/jfe/form/SV_a9kDs7HjP5H3xeS)) to receive periodic updates from the district as you prepare your child for their early learning journey. Updates may include tips on ensuring your child is ready for kindergarten, a list of what you need for kindergarten registration, scenes from kindergarten classrooms, and much more.



## Coffee and Ice Cream

Enjoy conversations and ice cream with SPS Administrators or conversations and coffee with SPS Leaders. Click links below for dates.

[Ice Cream with SPS](#)

[Coffee with SPS](#)

## ONE Spokane Stadium Parking Pass

This **parking pass** allows users to park for free this **fall 2023 only** in designated lots for **SPS events only**.

ONE Spokane Stadium will offer a voucher program for stadium event attendees who do not have credit or debit cards at the cashless concessions stands. Please see [Know-Before-You-Go](#) before you head to the Stadium for events.



The **Greater Spokane League** (GSL) provides quality events in interscholastic high school athletics, music, dance/drill teams and forensics. Participation in GSL events helps students learn time management, communication, advocacy, sportsmanship and teamwork skills that shape and mold better citizens. [Click here](#) for information on game passes and more.

## SPOKANE PUBLIC SCHOOLS CALENDAR 2023-24



## AUGUST

MON	TUE	WED	THUR	FRI
	1	2	3	4
7	8	9	10	11
14	15	16	17	18
21	22	23	24	25
♦28	♦29	♦30	31	

## SEPTEMBER

MON	TUE	WED	THUR	FRI
				1
4	5	6	7	8
11	12	13	14	15
18	19	20	21	22
25	26	27	28	29

## OCTOBER

MON	TUE	WED	THUR	FRI
2	3	4	5	6
9	10	11	12	♦13
16	17	18	19	20
23	24	25	26	27
30	31			

## NOVEMBER

MON	TUE	WED	THUR	FRI
		1	2	3
6	7	8	9	10
13	14	15	16	17
20	21	22	23	24
27	28	29	30	

## DECEMBER

MON	TUE	WED	THUR	FRI
				1
4	5	6	7	8
11	12	13	14	15
18	19	20	21	22
25	26	27	28	29

## JANUARY

MON	TUE	WED	THUR	FRI
1	2	3	4	5
8	9	10	11	12
15	16	17	18	19
22	23	24	25	26
29	30	31		

### SIGNIFICANT DATES

August 28 - 30..... Teacher Work Day / Prof. Learn. Imp. Day  
 August 31 - September 1 ..... K-12 Launch Conferences  
 September 4 ..... Labor Day  
 September 5 ..... First Day of Classes (1st through 12th)  
 September 6 ..... First Day of Kindergarten (A/B Rotation)  
 September 12.....First Day of All Kindergarten Together  
 September 25 ..... First Day for School Day Preschool (PK)  
 September 26 ..... First Day for AM/PM & CIP PK  
 October 13.....Prof. Learn. Imp. Day / Non Student Day  
 November 10 ..... Veterans Day  
 November 22-24 ..... Thanksgiving Break  
 December 25 - January 5 ..... Winter Break  
 January 15 ..... MLK Day  
 January 25-26 ..... Elem. Progress Conf. / Elem. Non Student Day  
 February 2 ..... Semester Break-Day / Non Student Day  
 February 19 ..... President's Day  
 February 20 ..... Prof. Learn. Imp. Day / Non Student Day  
 March 15 ..... Weather Make Up Day / Non Student Day  
 April 1-5 ..... Spring Break  
 May 27 ..... Memorial Day  
 June 7 ..... Last Day for AM/PM & CIP PK  
 June 11 ..... Last Day for School Day PK  
 June 14 ..... Last Day of School  
 June 17, 18 ..... Weather Make Up Days (if needed)  
 June 19 ..... Juneteenth

### Elementary Grading Periods

February 1 ..... End of First Semester  
 June 14 ..... End of Second Semester

### Elementary Reporting

#### First Grading Period

February 16 ..... Report Cards

#### Second Grading Period

June 14 ..... Report Cards

### Secondary Grading Periods

November 7 ..... End of First Quarter  
 February 1 ..... End of First Semester  
 April 12 ..... End of Third Quarter  
 June 14 ..... End of Second Semester

### Secondary Reporting

November 15 ..... First Quarter Report Cards  
 February 9 ..... First Semester Report Cards  
 April 19 ..... Third Quarter Report Cards  
 June 17 ..... Second Semester Report Cards

## FEBRUARY

MON	TUE	WED	THUR	FRI
			1	2
5	6	7	8	9
12	13	14	15	16
19	♦20	21	22	23
26	27	28	29	

## MARCH

MON	TUE	WED	THUR	FRI
				1
4	5	6	7	8
11	12	13	14	★15
18	19	20	21	22
25	26	27	28	29

## APRIL

MON	TUE	WED	THUR	FRI
1	2	3	4	5
8	9	10	11	12
15	16	17	18	19
22	23	24	25	26
29	30			

## MAY

MON	TUE	WED	THUR	FRI
		1	2	3
6	7	8	9	10
13	14	15	16	17
20	21	22	23	24
27	28	29	30	31

## JUNE

MON	TUE	WED	THUR	FRI
3	4	5	6	7
10	11	12	13	14
★17	★18	19	20	21
24	25	26	27	28

### LEGEND

- First/Last day of School
- Late Start/Collaboration
- Holiday
- No School/School Break Day
- Conferences
- ♦ Teacher Workday/Prof. Learn. Imp. Day
- ★ Weather/Emergency Makeup Day

# 2023-2024 SPS Calendar



Spokane Public Schools  
excellence for everyone



Follow Hutton Elementary on Facebook and  
checkout our website!

[Hutton Website](#)

Thank you to our sponsors!  
We appreciate you.



ROSAUERS  
SUPERMARKETS, INC.



CARUSO'S  
SANDWICHES & ARTISAN PIZZA  
"ONLY FRESH"



latah bistro



DUTCH BROS  
Coffee



Spokane Public Schools

[SPS Website](#)

[Unsubscribe kevind@spokaneschools.org](#)

[Update Profile](#) | [Constant Contact Data Notice](#)

Sent by heatherah@spokaneschools.org powered by



Try email marketing for free today!